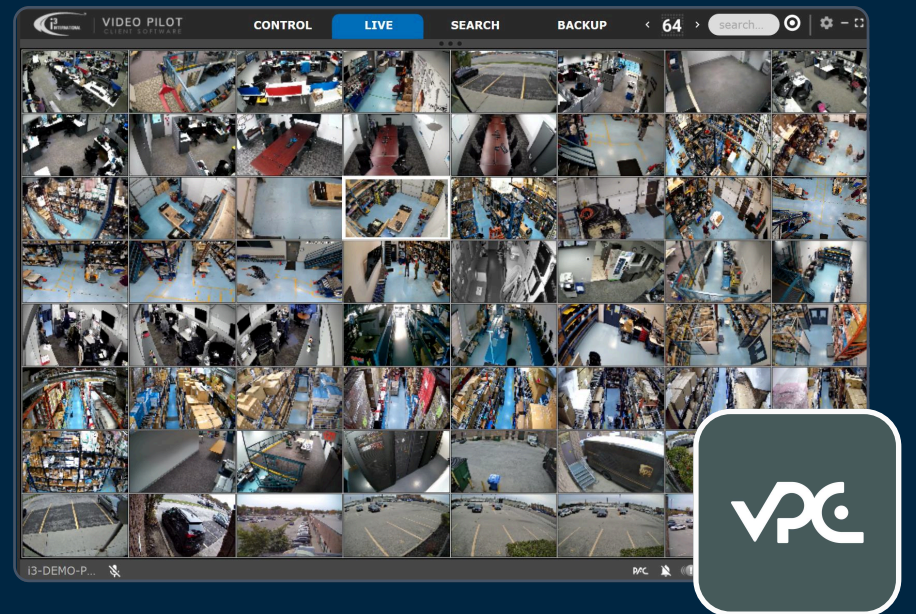


Video Pilot Client

Effortless Remote Surveillance with Fast, Secure Connections.

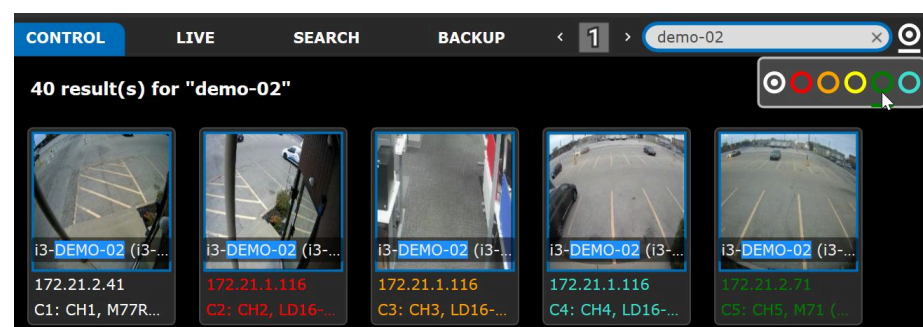


What sets VPC apart

Video Pilot Client (VPC) is i3's highly versatile remote client software, designed for fast connections and featuring a unique Graphic User Interface (GUI). Portions of the interface can be easily hidden to maximize viewing screen space. VPC automatically switches between main and sub-streaming depending on the display mode (full screen/multiplex) to provide the clearest video for identification purposes while preventing slow video transmission.

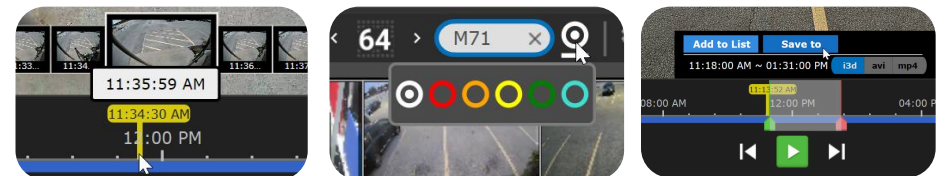
Cameras and servers can be tagged or custom-grouped for easy visual identification and quick access. The dynamic and powerful search bar allows locating servers, cameras, and backup files by name, IP, group, etc. Cameras from different remote servers can be grouped into Favorites folders for convenience and faster access. VPC's search and backup capabilities are designed to meet the demands of multiple site and camera connections. Users can search local and cloud video and perform instant video backup using the step-by-step wizard or directly from the search bar. Advanced i3Ai-based video search narrows down relevant footage in seconds.

VPC also allows importing custom facility maps and laying out available cameras by their physical installation locations. Facility maps help users identify camera locations and simplify viewing cameras in the vicinity. Cameras positioned closely on the map are automatically linked and displayed together, enabling users to track subjects throughout the facility.

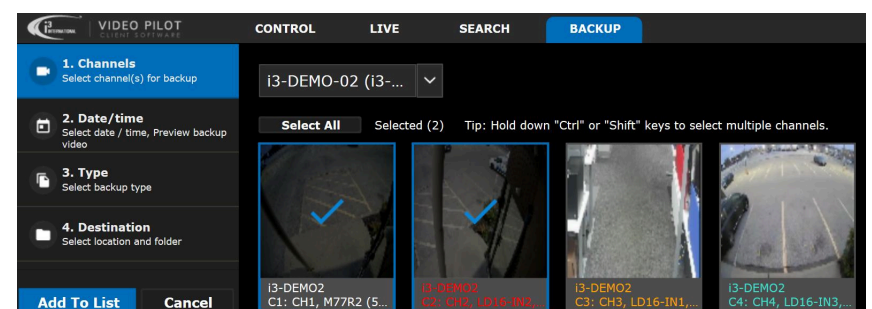


Intuitive Design

- **Flexible Layouts:** Instantly switch between camera views in various layouts (1, 4, 6, 9, 10, 16, 25, 36, or 64 cameras).
- **Custom Arrangements:** Drag-and-drop channels to create your preferred camera arrangement, with custom layouts saved in VPC configurations.
- **Interactive PTZ Mode:** Supports i3 fisheye camera models.
- **Favorites and Color-Tagging:** Create favorite folders to group cameras from various sites and/or color-code groups of cameras for quick identification and access.



- **Server Grouping:** Sort servers into groups for convenience.
- **Powerful Search:** Search for and connect to cameras across multiple sites by tagged color group, camera name, camera model, IP address, or Server ID.
- **Digital Zoom:** Zoom into images with mouse scroll or use the picture-in-picture feature.
- **Discreet On-Screen Display:** Hide/unhide camera names, server name, or current date/time.
- **Snapshot and Backup:** Capture snapshots with a single click and back up videos directly to removable media, shared network drive, or OneDrive synced folder.
- **Dynamic Thumbnails:** Easy search with dynamic thumbnails for quick video review.



Security Advantages

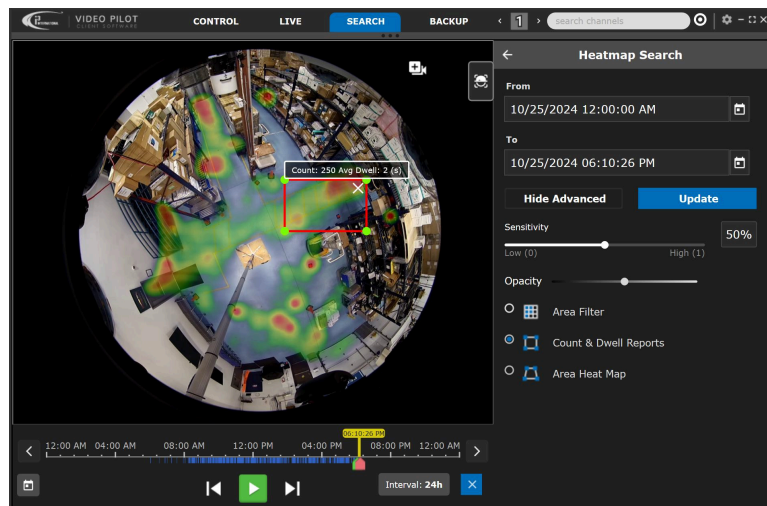
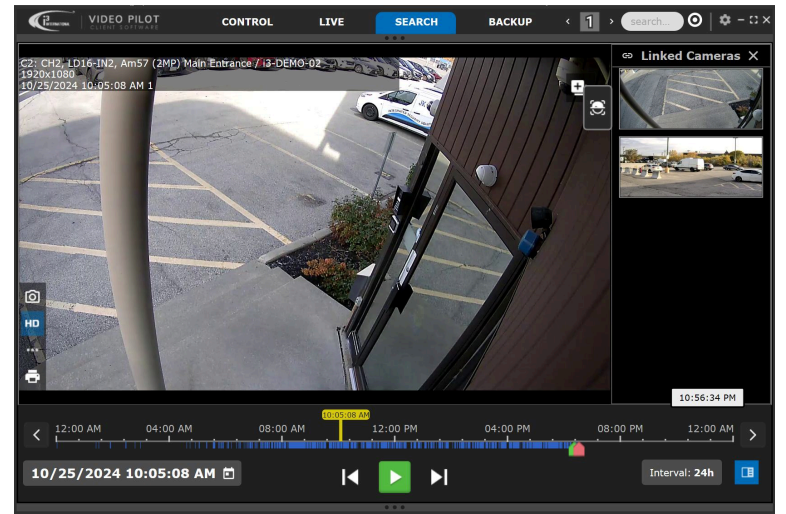
- **Enhanced Security:** Supports single sign-on and OTP security features with i3Host credentials.
- **Relay connection supported:** Single outbound port required.
- **Batch Login Update:** For multiple remote connections.
- **Automatic Updates:** Supports automatic updates.

Minimum Requirements

- **CPU:** Intel i5 or better. Note: Multiple instances require higher
- **RAM:** 8GB RAM
- **OS:** Windows 10, Windows 11
- **VC++:** Visual C++ Redistributable 2015-2022

Easy Search & Backup

- **Efficient Search:** Search for footage using a histogram with minute- or hour-based intervals and playback video at various speeds (2x, 4x, 8x, or 16x).
- **Cloud Recording Playback:** Supports cloud recording retrieval and playback.
- **Quick Search Mode:** Stay in quick search mode while viewing live feeds from other cameras.
- **Easy Backup:** Back up video by selecting a start and end time with a single click directly from the search timeline.
- **Audio Playback:** Playback audio recordings together with video from supported cameras.
- **Video Backup:** Supports AVI/MP4/i3Encrypted video backup and multi-channel backup.
- **Instant Snapshot:** One-click snapshot backup in Live and Search modes.

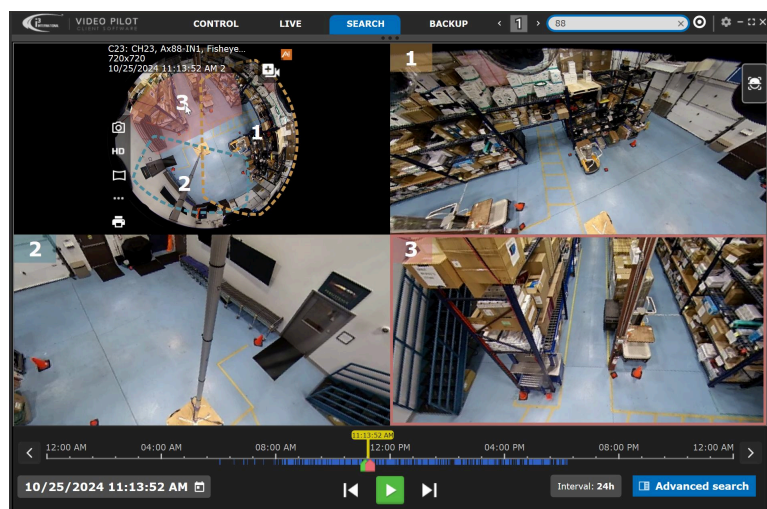
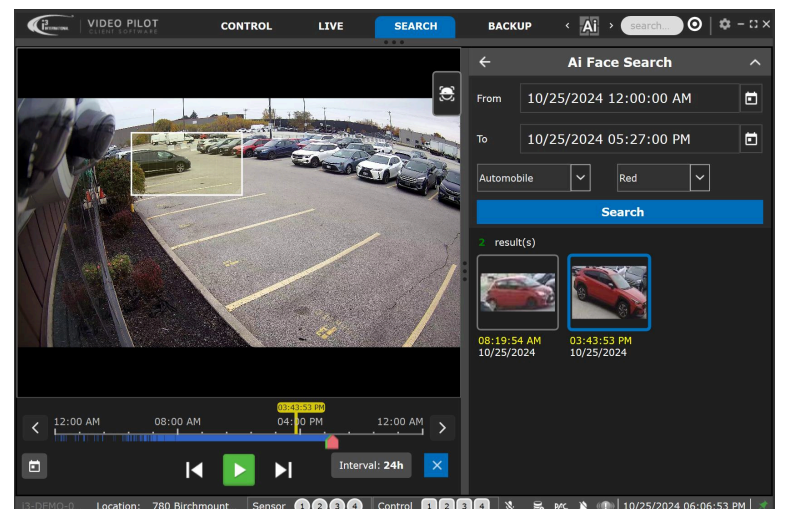


Advanced Search Features

- **AI-Powered Search:** Search for specific faces, clothing colors, or vehicles (AI module required).
- **Heatmap Search:** Highlights high-traffic areas (AI module required).
- **Sensor Search:** Alerts when sensors are triggered.
- **Object Search:** Identifies changes over a specified time.
- **Integrated Mapping:** Integrate a map of the location with camera layouts for easy access and use the map's follow mode to track objects across multiple cameras.

Additional Features

- **VPC Player:** A light weight application included with every *.i3d encrypted backup, allowing playback of multiple video channels with limited functionality.
- **Public View Monitors:** Configure up to two public view monitors with customizable display options for motion-, sensor-, or AI-triggered channels.
- **Text Overlay Display:** Hide/unhide or show integrated POS text overlay in a side panel.
- **Live Sensor and AI Alarming:** Visual and audible alarms whenever an AI alarm or a sensor is triggered.
- **License Plate Recognition:** Convenient panel for reviewing the most recent detected license plates (for supported cameras).
- **Video Command Support:** For third-party integrations.
- **Alert Centre and PACDM Integration:** Seamless integration for enhanced functionality.
- **Multiple Instances:** Open up to four separate instances of VPC simultaneously.



Security & Network Advantages

- **Enhanced Security:** Supports single sign-on and OTP security features with i3Host credentials.
- **Secure Relay connection supported:** Single outbound port required.
- **Batch Login Update:** For multiple remote connections.
- **Automatic Updates:** Supports automatic updates.
- **Faster Connections:** Utilizes i3 video streaming and Relay Server technology for quicker and secure connections to remote sites.
- **Dual-Streaming Technology:** Ensures HD images when bandwidth is available and adjusts to low resolution when bandwidth is limited.
- **Centralized Access:** Multiple users can log in and access one or more sites simultaneously through single sign-on technology (i3Host or CMS credentials).
- **Single-Click Disconnect:** Disconnect from all servers and cameras with a single click.



i3 International is a leader in AI-powered surveillance and business insights solutions, helping businesses worldwide enhance security, improve operational efficiency, and increase customer engagement. For more information, visit www.i3international.com or contact us today via info@i3international.com or call **1.866.840.0004**.